

Accessing Information via DNR Applications

Well data on the SONRIS Application

- Start at www.sonris.com
- Select “Data Access”
- Follow **Conservation → Well Information → Wells By API or Field** and select “Standard”
 - A new window will pop up for the SONRIS application
 - Current browser requirements: Java V1.7 (will NOT run with Java V1.8 or higher)
 - Future updates can be found **Data Access → FAQs**
- Select the F7 key to enter search mode
- Enter known parameters
 - Percent sign (%) is the wildcard search function (i.e., if you know a portion of the well name [for instance, SL 344], enter %S%L%344% in the “Well Name” cell)
 - Can search by status code, parish code, permit date, operator code, field ID, section, township, range, etc!
 - See other applications on Data Access to acquire code definitions
- Select the F8 key to execute search
- Results will populate
 - Data will be available by selecting the buttons or scrolling to the right
 - Select the backdoor icon in the title bar to return to previous pages or exit the application

Well data on SONRIS Lite

Once serial number is known, comprehensive data can be loaded in one place!

- Start at www.sonris.com
- Select “Data Access”
- Follow **Conservation → Well Information → Wells By Serial Number** and select “Lite”
- Enter serial number, select “Submit Query”
- Data will populate! Explanation of some of the not-so-self-explanatory fields:
 - Scout Info = data keyed into SONRIS by the District Office from weekly reports
 - Perforations = data keyed into SONRIS by Baton Rouge from Form Comp
 - Well Tests = data in SONRIS from DM1Rs/DT1s
 - Lease\Unit\Well Production = production data reported by LUW associated with the serial number at that time

Well documentation on Document Access

- Start at www.sonris.com
- Select “Document Access”
- Follow **Permitting to Well Permit to Drill/Amend**; highlight Well Permit to Drill/Amend and select “NEXT”
- Key in serial number, select “Get associated documents” box and select “SEARCH”
 - Make sure pop up blocker allows pop ups from SONRIS
 - A new window will populate with all scanned documents for the serial number

Accessing Information via DNR Applications

Field documentation on Document Access

Index of Field Orders:

- Start at www.sonris.com
- Select "Document Access"
- Follow **Regulatory** to **Field Order Index-Black Books**; highlight Field Order Index-Black Books and select "NEXT"
- Key in Field Code and select "SEARCH"
- A new window will populate with a link to an Excel spreadsheet
 - Spreadsheet is an index to all Orders in Field
 - Hyperlinks within spreadsheet to Order
 - If no hyperlink, specific Order (or Order series) can be accessed via Document Access (steps below)

Specific Orders or Order Series:

- Start at www.sonris.com
- Select "Document Access"
- Follow **Regulatory** to **Field Order**; highlight Field Order and select "NEXT"
- Key in Order select "Get associated documents" box and select "SEARCH"
 - Percent sign (%) can be used to access an Order series (i.e., search 252-J% for Orders 252-J-1, 252-J-2, 252-J Supplement, etc.)
- A new window will populate with PDF links to Orders and Survey Plats (if any)

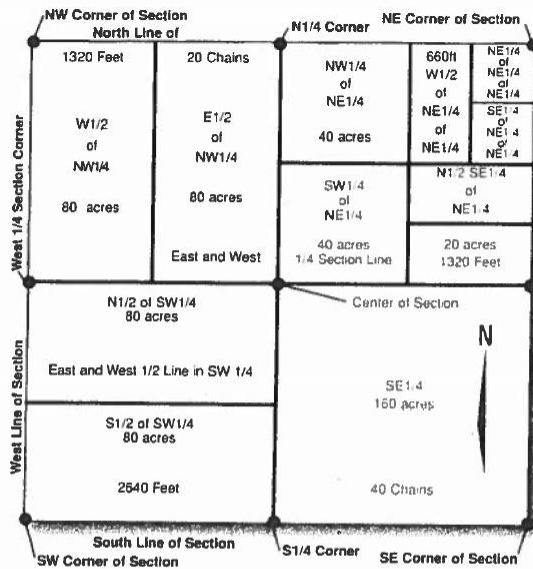
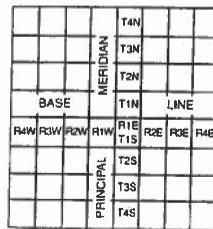


Table of Measurements

Long Measure	Square Measure
1 Mile = 80 chains = 320 rods = 320 perches = 320 poles = 5,280 feet = 8,000 links = 1,609.2655 meter	1 Sq. Mile = Regular Section/Land = 640 acres = 2,590 sq. km = 259 hectares 1 Acre = 10 sq. chains = 160 sq. rods = 160 perches = 160 poles = 43,560 sq. feet = 0.4047 hectare = 4,047 sq. meters
1 Link = 0.66 feet = 7.92 inches = 0.2017 meter	1 Hectare = 2.471 acres 1 Sq. Meter = 10.764 sq. feet
1 Meter = 39.370 inches = 3.281 feet = 4 rods = 4 perches = 4 poles = 66 feet = 100 links = 20.1168 meters	Texas (Spanish) Land Measure 1 Vara = 33 1/8 inches = 2.78 ft. (To reduce Varas to ft. divide by .36) 1 Caballeria = 108 acres 1 Labor = 1,000,000 sq. Varas = 177.136 acres 1 League = 25,000,000 sq. Varas = 4,428.4 acres
1 Rod = 16 1/2 feet 1 Perch = 25 links 1 Pole = 5.0292 meters 1 Inch = 0.0254 meter 1 Foot = 0.3048 meter	Louisiana (French) Land Measure 1 Arpent = 191.833 feet 1 Square = 0.84628 acres 1 Acre = 1.183 sq arpents

36	31	32	33	34	35	36	31
1	6	5	4	3	2	1	6
12	7	8	9	10	11	12	7
13	18	17	16	15	14	13	18
24	19	20	21	22	23	24	19
25	30	29	28	27	26	25	30
36	31	32	33	34	35	36	31
1	6	5	4	3	2	1	6



Official Plan of Numbering Congressional Townships from Meridians and Base Lines

LAGNIAPPE!